

HOFFMANN Fördertechnik
GmbH Wurzen

LIFTKET

ELECTRIC CHAIN HOISTS



Innovative electric chain hoists – Milestones on the way to success



1952



1954



1955



1956

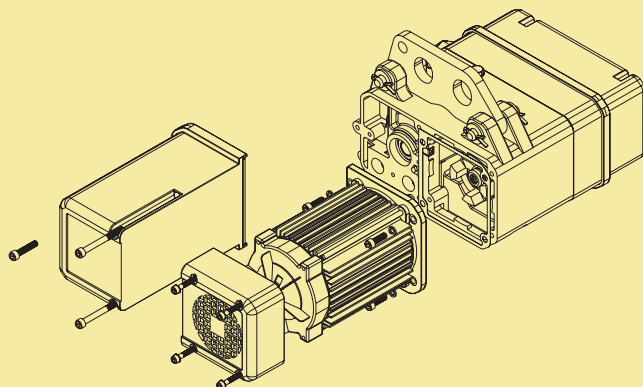
The initial design of the LIFTKET has shown the change to low headroom hoists by placing the motor and the gear on one horizontal level as the first electric chain hoist on the market. The LIFKET was the first chain hoist to introduce the special patented clutch-brake system with no chance of a load slip if the clutch is damaged or worn. The perfection of the STAR LIFKET clutch-brake system has no comparison around the globe today.



STAR LIFTKET – The generation of the 21st century

Special advantages

- High duty rate especially for areas with tropical climate
- Extremely maintenance free design with easy access to all wearing parts and changeability without need of special tools. This was achieved by following the module concept. Motor, oil filled and sealed gearbox and brake are replaceable and ready for operation without any adjustment. Only the clutch would have to be adjusted.
- Fan cooled hoisting motor with cooling ribs designed for the STAR LIFTKET gearbox contour
- Use of first class materials are to grant and increase the quality and liability for all the parts and the technology. This was achieved by performing a long term test procedure in our laboratories. The proofed life cycle of the parts exceeds the FEM requirements for the specific duty groups.
- Advanced safety by implementing of a new, patented clutch-brake system. This was achieved by further development of the idea well known from LIFTKET, which means not to have any sliding connections between load and brake. All clutch liners are asbestos free.
- Make a change from one chain fall to two or counter wise is very easy, fast and save (patented solution)
- Fixing of the 2nd chain fall with absolutely safe and easy handling (patented solution)
- Modern shape and design
- Compact and durable Aluminium gearbox with low weight

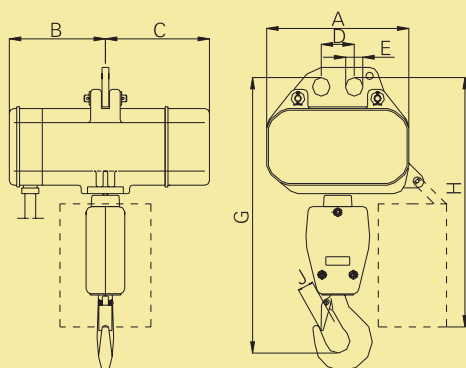


1966

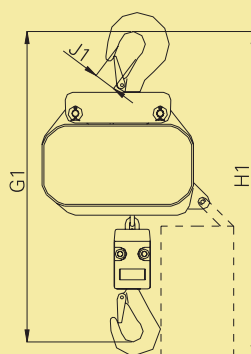
Three phases electric chain hoists 125 kg – 12500 kg

Version 1/00A –9.1/00S

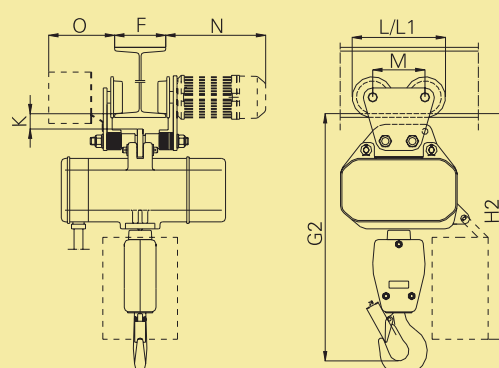
Basic version



... with top hook

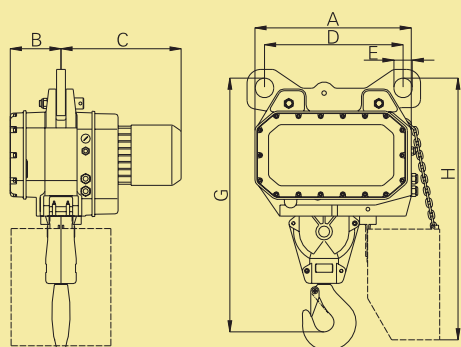


... with electric trolley or push trolley

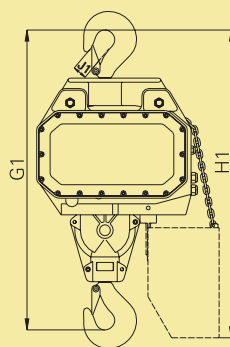


Version 13/00X

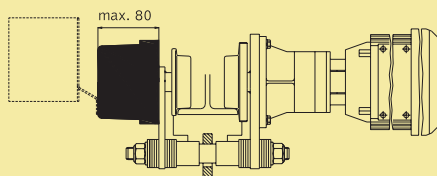
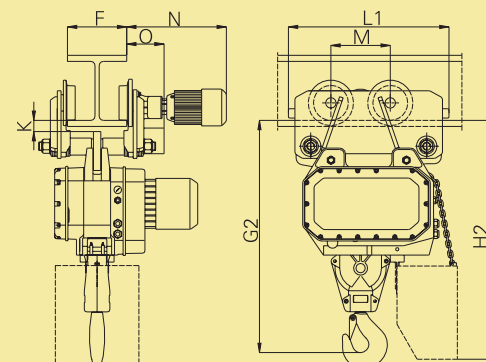
Basic version



... with top hook



... with electric trolley or push trolley



Counter weights might be required for double speed trolleys for special combinations of load capacity, flange width and type of control (max. weight 9.4 kg).

Curve radius

Trolley capacity	min. curve radius
up to 1000 kg	1.0 m
up to 3200 kg	1.5 m
up to 6300 kg	2.0 m

Remark: For model 13/00X a curve radius is not allowed.

Please note:

- Power supply 400 V, 3 ph, 50 Hz
- Protection class IP54 / Insulation class F
- Different voltage and frequency options available on request
- Hoist weight will increase by approximately 2 kg if low voltage control is required
- The hoist weight has been calculated for 3 m height of lift
- Control cable 1.5 m supplied as standard
- Height of lift 3.0 m supplied as standard
- Different heights of lift and control cable lengths available on request
- If heights of lift increases beyond 20 m, SWL (Safe Working Load) has to be reduced by the additional weight of the chain
- Low voltage control will be supplied as standard on version 8.1/9.1 and 13

The technical data mentioned in the tables are approximate and subjects to change.



Capacity kg	Version	Model	Lifting speed m/min	Number of load chain	Duty group FEM 9.511	Dimension of load chain DIN 5684 mm	Lifting motor kW	Duty rate starts/hour ED%/S/h	A mm	B Direct control mm	B Low voltage control mm	C mm	D mm	E mm	G mm	G1 mm	G2 mm	H mm
125	125/1-8	1/00A	8	1	2m	4x12	0.18	40/240	188	167	230	145	58	27	345	424	391	369
150	150/1-24	2/53D	24	1	2m	5x15	1.1	40/240	260	199	246	200	58	27	385	464	431	496
250	250/2-4	1/00A	4	2	2m	4x12	0.18	40/240	188	167	230	145	58	27	372	451	418	369
	250/1-6	1.1/00B	6	1	1Bm	4x12	0.27	25/150	188	172	235	145	58	27	345	424	391	369
	250/1-8/2	3/00G	8/2	1	2m	5x15	0.6/0.1	60/25/240	260	199	246	200	58	27	385	464	431	496
	250/1-12	2/00D	12	1	2m	5x15	0.75	40/240	260	199	246	200	58	27	385	464	431	496
	250/1-16	2/50D	16	1	2m	5x15	1.1	40/240	260	199	246	200	58	27	385	464	431	496
	250/1-16/4	5/50I	16/4	1*	2m	5x15	1.1/0.2	40/10/240	260	199	246	245	58	30	385	464	445	501
300	300/2-12	2/53D	12	2	2m	5x15	1.1	40/240	260	199	246	200	58	27	438	517	484	496
500	500/2-3	1.1/00B	3	2	1Bm	4x12	0.27	25/150	188	172	235	145	58	27	372	451	418	369
	500/2-4/1	3/00G	4/1	2	2m	5x15	0.6/0.1	60/25/240	260	199	246	200	58	27	438	517	484	496
	500/2-6	2/00D	6	2	2m	5x15	0.75	40/240	260	199	246	200	58	27	438	517	484	496
	500/2-8	2/50D	8	2	2m	5x15	1.1	40/240	260	199	246	200	58	27	438	517	484	496
	500/1-10	4/00H	10	1	2m	7x22	0.84	40/240	260	199	246	200	58	30	403	496	455	501
	500/1-10/2.5	5/00I	10/2.5	1	2m	7x22	1.1/0.2	40/10/240	260	199	246	245	58	30	403	496	455	501
	1000/2-5	4/00H	5	2	2m	7x22	0.84	40/240	260	199	246	200	58	30	496	589	548	501
	1000/1-5	4.1/00J	5	1	1Bm	7x22	0.84	25/150	260	213	260	200	58	30	403	496	455	501
1000	1000/2-5/1.25	5/00I	5/1.25	2	2m	7x22	1.1/0.2	40/10/240	260	199	246	245	58	30	496	589	548	501
	1000/1-5/1.25	5.1/00K	5/1.25	1	1Bm	7x22	1.1/0.2	25/10/150	260	213	260	245	58	30	403	496	455	501
	1000/1-6/1.5	7/000	available as STAR LIFTKET see page 9/10															
	1000/1-8	6/00L	available as STAR LIFTKET see page 9/10															
	1000/1-10	4.2/00M	10	1	1Bm	7x22	2.2	25/150	260	213	260	245	58	30	403	496	455	501
	1000/1-10/2.5	7.2/00T	available as STAR LIFTKET see page 9/10															
	1000/1-16	6/51L	available as STAR LIFTKET see page 9/10															
	1600/1-10	6.1/00P	available as STAR LIFTKET see page 9/10															
1600	1600/1-10	6.1/00P	available as STAR LIFTKET see page 9/10															
	1600/1-6/1.5	7.1/00N	available as STAR LIFTKET see page 9/10															
2000	2000/2-2.5	4.1/00J	2.5	2	1Bm	7x22	0.84	25/150	260	213	260	200	58	30	496	589	548	501
	2000/2-2.5/0.6	5.1/00K	2.5/0.6	2	1Bm	7x22	1.1/0.2	25/10/150	260	213	260	245	58	30	496	589	548	501
	2000/2-3/0.75	7/000	available as STAR LIFTKET see page 9/10															
	2000/2-4	6/00L	available as STAR LIFTKET see page 9/10															
	2000/2-5	4.2/00M	5	2	1Bm	7x22	2.2	25/150	260	213	260	245	58	30	496	589	548	501
	2000/2-5/1.25	7.2/00T	available as STAR LIFTKET see page 9/10															
	2000/2-8	6/51L	available as STAR LIFTKET see page 9/10															
	2500/1-4	8.2/50U	available as STAR LIFTKET see page 9/10															
2500	2500/1-8	8.1/00R	available as STAR LIFTKET see page 9/10															
	2500/1-8/2.5	9.1/00S	available as STAR LIFTKET see page 9/10															
	3200/2-5	6.1/00P	available as STAR LIFTKET see page 9/10															
3200	3200/2-3/0.75	7.1/00N	available as STAR LIFTKET see page 9/10															
	3200/1-7	8.1/52R	available as STAR LIFTKET see page 9/10															
	4000/1-5.6/1.4	13/00X	5.6/1.4	1	2m	16x45	6/1.3	60/40/240	564	184	184	434	500	66	823	995	903	957
4000	4000/1-5.6/1.4	13/00X	5.6/1.4	1	2m	16x45	6/1.3	60/40/240	564	184	184	434	500	66	823	995	903	957
	5000/2-2	8.2/50U	available as STAR LIFTKET see page 9/10															
	5000/2-4	8.1/00R	available as STAR LIFTKET see page 9/10															
	5000/2-4/1.25	9.1/00S	available as STAR LIFTKET see page 9/10															
5000	5000/1-5.6/1.4	13/00X	5.6/1.4	1	1Am	16x45	6/1.3	60/40/180	564	184	184	434	500	66	823	995	903	957
	6300/1-5.6/1.4	13/00X	5.6/1.4	1	1Bm	16x45	6.4/1.6	60/40/150	564	184	184	434	500	66	823	995	903	957
	6300/2-3.5	8.1/52R	available as STAR LIFTKET see page 9/10															
6300	8000/2-2.8/0.7	13/00X	2.8/0.7	2	2m	16x45	6/1.3	60/40/240	564	184	184	434	500	66	917	1089	997	957
	10000/2-2.8/0.7	13/00X	2.8/0.7	2	1Am	16x45	6.4/1.6	60/40/180	564	184	184	434	500	66	917	1089	997	957
	12500/2-2.8/0.7	13/00X	2.8/0.7	2	1Bm	16x45	6.4/1.6	60/40/150	564	184	184	434	500	66	917	1089	997	957

* single fall only

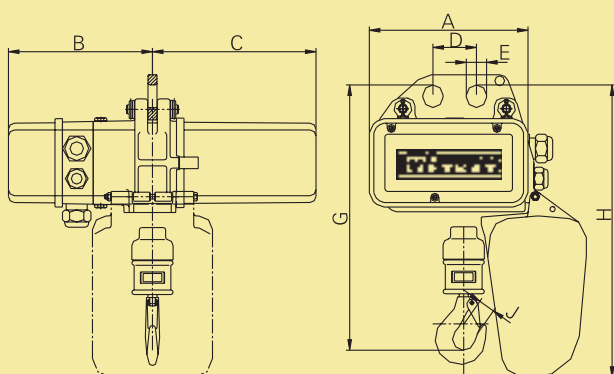
H1	H2	J	J1	Trolley type	F Flange width	Travelling speed	Travelling motor	K	L <small>Push trolley</small>	L1 <small>Electric trolley</small>	M	N (for travelling speed)	O (for low voltage control only)	Dia- meter of the wheels	Weights		
mm	mm	mm	mm		mm	m/min	kW	mm	mm	mm	mm	mm (m/min)	mm	mm	LIFTKET- Basic version	Push trolley	Electric trolley
448	415	20	22	500	N S1 S2 50-106 110-200 210-300	16 or 25 or 5/20	0.12 0.12 0.04/0.18	33	200	216	112	220 (16 25) 275 (5/20)	142	70	13		
581	548	20	22	500											25		
448	415	22	22	500											14		
448	415	20	22	500											13	8	13 (16 25) 18 (5/20)
581	548	20	22	500											26		
581	548	20	22	500											25		
581	548	20	22	500											25		
600	557	20	28	1000 N S1 S2	66-135 137-215 220-300	16 or 25 or 5/20	0.12 0.12 0.04/0.18	38 36 34.5	200	216	112	220 (16 25) 275 (5/20)	146	70	36	10	13 (16 25) 18 (5/20)
581	548	22	22	500	N S1 S2 50-106 110-200 210-300	16 or 25 or 5/20	0.12 0.12 0.04/0.18	33	200	216	112	220 (16 25) 275 (5/20)	142	70	27	8	13 (16 25) 18 (5/20)
448	415	22	22	500											14		
581	548	22	22	500											28		
581	548	22	22	500											27		
581	548	22	22	500	N S1 S2 66-135 137-215 220-300	16 or 25 or 5/20	0.12 0.12 0.04/0.18	38 36 34.5	200	216	112	220 (16 25) 275 (5/20)	146	70	27	10	13 (16 25) 18 (5/20)
600	557	22	28	1000											30		
600	557	22	28	1000											36		
600	557	28	28	1000											34		
600	557	22	28	2000											31		
600	557	28	28	1000											39		
600	557	22	28	2000											37		
600	557	22	28	2000 N S1 S2	66-135 137-215 220-300	16 or 25 or 5/20	0.12 0.12 0.04/0.18	38 36 34.5	200	216	112	220 (16 25) 275 (5/20)	146	70	37	10	13 (16 25) 18 (5/20)
600	557	28	28	2000 N S1 S2	66-135 137-215 220-300	16 or 25 or 5/20	0.12 0.12 0.04/0.18	38 36 34.5	200	216	112	220 (16 25) 275 (5/20)	146	70	36	10	13 (16 25) 18 (5/20)
600	557	28	28	2000	41												
600	557	28	28	2000 N S1 S2	66-135 137-215 220-300	16 or 25 or 5/20	0.12 0.12 0.04/0.18	38 36 34.5	200	216	112	220 (16 25) 275 (5/20)	146	70	41	10	13 (16 25) 18 (5/20)
1128	1036	52	52	12500 N S1	140-230 220-310	4/16	0.12/0.55	44	—	700	256	430 (4/16)	171	150	180	115	137 (4/16)
1128	1036	52	52	12500 N S1	140-230 220-310	4/16	0.12/0.55	44	—	700	256	430 (4/16)	171	150	180	115	137 (4/16)
1128	1036	52	52	12500	180												
1128	1036	52	52	12500 N S1	140-230 220-310	4/16	0.12/0.55	44	—	700	256	430 (4/16)	171	150	199	115	137 (4/16)
1128	1036	52	52	12500	199												
1128	1036	52	52	12500	199												

STAR LIFTKET

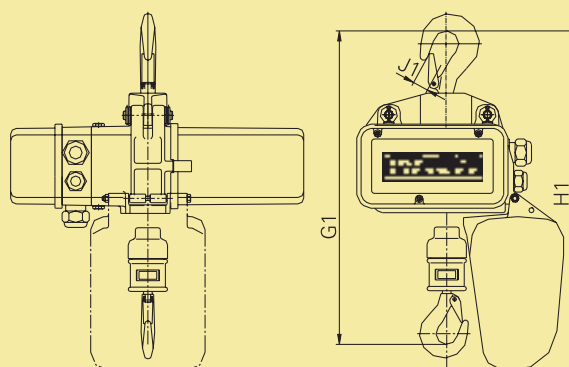
Three phases electric chain hoists

125 kg – 6300 kg

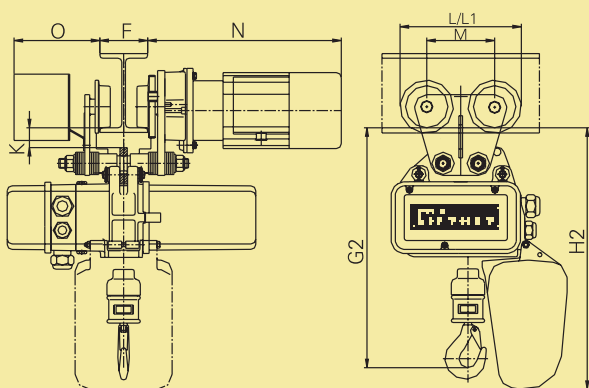
Basic version



... with top hook



... with electric trolley or push trolley



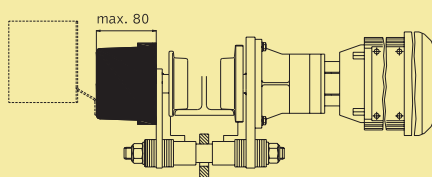
Three phases electric chain hoists 125 kg – 6300 kg

Please note:

- Power supply 400 V, 3 ph, 50 Hz
- Protection class IP55 / insulation class F
- Different voltage and frequency options available on request
- Hoist weight will increase by approximately 2 kg if low voltage control is required
- The hoist weight has been calculated for 3 m heights of lift
- Control cable 1.5 m supplied as standard
- Height of lift 3.0 m supplied as standard
- Different heights of lift and control cable lengths available on request
- If heights of lift increases beyond 20 m, SWL (Safe Working Load) has to be reduced by the additional weight of the chain
- STAR model 091/... (with 2 speeds) and 11... /...are equipped with 24 V low voltage control as standard
- STAR model 090/... are equipped with low voltage control as standard, direct control on request

The technical data mentioned in the tables are approximate and subjects to change.

Counter weights might be required for double speed trolleys for special combinations of load capacity, flange width and type of control (max. weight 9.4 kg).



Curve radius

Trolley capacity	min. curve radius
up to 1000 kg	1.0 m
up to 3200 kg	1.5 m
up to 6300 kg	2.0 m



INNOVATION

Capacity	Version	STAR-Model	Lifting speed	Numbers of load falls	Duty group hoist FEM 9.511	Duty group load chain EN 818-7	Dimension of load chain DIN 5684-8	Lifting motor	Duty rate starts/hour	A	B	C	D	E	G	G1	G2	H	H1	H2	J	J1	Trolley type		
kg			m/min			mm	mm	kW	ED%/S/h	mm	mm	mm	mm	mm	mm	mm	mm	mm	mm	mm	mm	mm			
125	125/1-8	020/52	8	1	3m	2m	4x12	0.25	60/360	212	192	218	58	27	354	432	401	469	547	516	20	22	500		
	125/1-8/2	021/53	8/2	1	3m	2m	4x12	0.32/0.08	50/40/240	212	192	218	58	27	354	432	401	469	547	516	20	22	500		
	125/1-24	020/50	24	1	3m	18m	4x12	0.55	60/240	212	192	218	58	27	354	432	401	469	547	516	20	22	500		
	125/1-24/6	051/50	24/6	1	3m	2m	5.2x15	0.6/0.1	60/25/240	266	232	274	58	30	390	462	436	509	582	565	20	22	500		
160	160/1-6/1.5	021/52	6/1.5	1	3m	2m	4x12	0.32/0.08	40/25/240	212	192	218	58	27	354	432	401	469	547	516	20	22	500	N S1 S2	
250	250/2-4	020/52	4	2	3m	2m	4x12	0.25	60/360	212	192	218	58	27	407	485	454	469	547	516	22	22	500		
	250/2-4/1	021/53	4/1	2	3m	2m	4x12	0.32/0.08	50/40/240	212	192	218	58	27	407	485	454	469	547	516	22	22	500		
	250/1-6	020/53	6	1	3m	2m	4x12	0.55	60/240	212	192	218	58	27	354	432	401	469	547	516	20	22	500		
	250/1-8	020/54	8	1	2m	18m	4x12	0.55	60/240	212	192	218	58	27	354	432	401	469	547	516	20	22	500		
	250/1-8/2	021/51	8/2	1	2m	18m	4x12	0.32/0.08	40/25/240	212	192	218	58	27	354	432	401	469	547	516	20	22	500		
	250/1-12	030/50	12	1	2m	2m	5.2x15	0.55	60/240	212	192	218	58	27	354	432	401	469	547	516	20	22	500		
	250/2-12	020/50	12	2	3m	18m	4x12	0.55	60/240	212	192	218	58	27	407	485	454	469	547	516	22	22	500		
	250/1-12/3	051/52	12/3	1	3m	2m	5.2x15	0.6/0.1	40/10/240	266	232	274	58	30	390	462	436	509	582	565	20	22	500		
	250/2-12/3	051/50	12/3	2	3m	2m	5.2x15	0.6/0.1	60/25/240	266	232	274	58	30	443	515	489	509	582	565	22	22	500		
	250/1-18/4.5	051/55	18/4.5	1	3m	2m	5.2x15	1.1/0.2	60/25/240	266	232	274	58	30	390	462	436	509	582	565	20	22	500		
	250/1-24	050/52	24	1	3m	18m	5.2x15	1.1	60/240	266	232	274	58	30	390	462	436	509	582	565	20	22	500		
	320	320/2-3/0.75	021/52	3/0.75	2	3m	2m	4x12	0.32/0.08	40/25/240	212	192	218	58	27	407	485	454	469	547	516	22	22		500
		320/1-10	030/53	10	1	18m	2m	5.2x15	0.55	40/240	212	192	218	58	30	354	432	410	469	547	516	20	22		1000
	400	400/1-10	050/53	10	1	1Am	18m	5.2x12	0.75	50/240	266	232	274	58	30	390	462	446	509	582	565	20	22	1000	N S1 S2
500	500/2-3	020/53	3	2	3m	2m	4x12	0.55	60/240	212	192	218	58	27	407	485	454	469	547	516	22	22	500	N S1 S2	
	500/2-4	020/54	4	2	3m	18m	4x12	0.55	60/240	212	192	218	58	27	407	485	454	469	547	516	22	22	500		
	500/2-4/1	021/51	4/1	2	2m	18m	4x12	0.32/0.08	40/25/240	212	192	218	58	27	407	485	454	469	547	516	22	22	500		
	500/2-6	030/50	6	2	2m	2m	5.2x12	0.55	60/240	212	192	218	58	27	407	485	454	469	547	516	22	22	500		
	500/2-6/1.5	051/52	6/1.5	2	3m	2m	5.2x12	0.6/0.1	40/10/240	266	232	274	58	30	443	515	489	509	582	565	22	22	500		
	500/1-8	030/52	8	1	18m	18m	5.2x12	0.55	40/240	212	192	218	58	30	354	432	410	469	547	516	20	22	1000		
	500/2-9/2.3	051/55	9/2.3	2	3m	2m	5.2x12	1.1/0.2	60/25/240	266	232	274	58	30	443	515	489	509	582	565	22	22	500		
	500/1-10	070/51	10	1	2m	2m	7.2x21	1.1	60/240	266	232	274	58	30	404	492	460	511	599	567	22	28	1000		
	500/1-10/2.5	071/53	10/2.5	1	2m	2m	7.2x21	1.1/0.2	60/25/240	266	232	274	58	30	404	492	460	511	599	567	22	28	1000		
	500/2-12	050/52	12	2	3m	18m	5.2x12	1.1	60/240	266	232	274	58	30	443	515	489	509	582	565	22	22	500		
630	630/2-5	030/53	5	2	18m	2m	5.2x15	0.55	40/240	212	192	218	58	30	407	485	463	469	547	516	22	22	1000	N S1 S2	
	630/1-10	070/57	10	1	2m	2m	7.2x21	1.1	60/240	266	232	274	58	30	404	492	460	511	599	567	22	28	2000		
800	800/2-5	050/53	5	2	1Am	18m	5.2x15	0.75	50/240	266	232	274	58	30	443	515	499	509	582	565	22	22	1000	N S1 S2	
	800/1-8	070/54	8	1	2m	2m	7.2x21	1.1	60/240	266	232	274	58	30	404	492	460	511	599	567	22	28	2000		
1000	1000/2-4	030/52	4	2	18m	18m	5.2x15	0.55	40/240	212	192	218	58	30	407	485	463	469	547	516	22	22	1000	N S1 S2	
	1000/2-5	070/51	5	2	2m	2m	7.2x21	1.1	60/240	266	232	274	58	30	514	582	570	511	599	567	28	28	1000		
	1000/2-5/1.25	071/53	5/1.25	2	2m	2m	7.2x21	1.1/0.2	60/25/240	266	232	274	58	30	514	582	570	511	599	567	28	28	1000		
	1000/1-6	070/55	6	1	1Am	18m	7.2x21	1.1	40/240	266	232	274	58	30	404	492	460	511	599	567	22	28	2000		
	1000/1-6/1.5	071/55	6/1.5	1	1Am	18m	7.2x21	1.1/0.2	60/25/240	266	232	274	58	30	404	492	460	511	599	567	22	28	2000		
	1000/1-8	090/54	8	1	3m	3m	9x27	2.2	60/240	358	285	358	85	34	491	616	550	619	744	678	28	30	2000		
	1000/1-8/2	091/51	8/2	1	3m	3m	9x27	1.5/0.37	60/25/240	358	285	358	85	34	491	616	550	619	744	678	28	30	2000		
	1000/1-10	070/53	10	1	1Am	18m	7.2x21	1.7	60/240	266	232	274	58	30	404	492	460	511	599	567	22	28	2000		
	1000/1-10	090/52	10	1	3m	3m	9x27	3.0	60/240	358	285	358	85	34	491	616	550	619	744	678	28	30	2000		
		1000/1-10/2.5	091/52	10/2.5	1	3m	3m	9x27	1.5/0.37	60/25/240	358	285	358	85	34	491	616	550	619	744	678	28	30		2000
1250	1250/2-5	070/57	5	2	2m	2m	7.2x21	1.1	60/240	266	232	274	58	30	514	582	570	511	599	567	28	28	2000	N S1 S2	
	1250/1-8	070/56	8	1	18m	18m	7.2x21	1.7	60/240	266	232	274	85	34	421	492	480	528	599	587	22	28	3200	N S1 S2	
1600	1600/2-4	070/54	4	2	2m	2m	7.2x21	1.1	60/240	266	232	274	58	30	514	582	570	511	599	567	28	28	2000	N S1 S2	
	1600/1-8	090/55	8	1	2m	2m	9x27	2.2	60/240	358	285	358	85	34	491	616	550	619	744	678	28	30	3200	N 	

F Flange width	Travelling speed	Travelling motor	K	L	L1	M	N	O	Dia- meter of the wheels	Weights		
mm	m/min	kW	mm	mm	mm	mm	for travelling speed	for low voltage control trolley	mm	STAR LIFTKET- Basic version kg	Push trolley kg	Electric trolley kg
50-106 10-200 10-300	16 or 25 or 5/20	0.12 0.12 0.04/0.18	33	200	216	112	220 (16 25) 292 (5/20)	142	70	16	8	15 (16 25) 18 (5/20)
										16		
										16		
										33		
										16		
										17		
										17		
										16		
										16		
										17		
										17		
										33		
										35		
										33		
										33		
										17		
										17		
56-135 37-215 20-300	16 or 25 or 5/20	0.12 0.12 0.04/0.18	38 36 34.5	200	216	112	220 (16 25) 292 (5/20)	146	70	33	10	17 (16 25) 19 (5/20)
50-106 10-200 10-300	16 or 25 or 5/20	0.12 0.12 0.04/0.18	33	200	216	112	220 (16 25) 292 (5/20)	142	70	17	8	15 (16 25) 18 (5/20)
56-135 37-215 20-300	16 or 25 or 5/20	0.12 0.12 0.04/0.18	38 36 34.5	200	216	112	220 (16 25) 292 (5/20)	146	70	18	10	17 (16 25) 19 (5/20)
50-106 10-200 10-300	16 or 25 or 5/20	0.12 0.12 0.04/0.18	33	200	216	112	220 (16 25) 292 (5/20)	142	70	35	8	15 (16 25) 18 (5/20)
56-135 37-215 20-300	16 or 25 or 5/20	0.12 0.12 0.04/0.18	38 36 34.5	200	216	112	220 (16 25) 292 (5/20)	146	70	36	10	17 (16 25) 19 (5/20)
										42		
50-106 10-200 10-300	16 or 25 or 5/20	0.12 0.12 0.04/0.18	33	200	216	112	220 (16 25) 292 (5/20)	142	70	35	8	15 (16 25) 18 (5/20)
56-135 37-215 20-300	16 or 25 or 5/20	0.12 0.12 0.04/0.18	38 36 34.5	200	216	112	220 (16 25) 292 (5/20)	146	70	19	10	17 (16 25)
										36		
										35		19 (5/20)
										36	10	
56-135 37-215 20-300	16 or 25 or 5/20	0.12 0.12 0.04/0.18	38 36 34.5	200	216	112	220 (16 25) 292 (5/20)	146	70	20		
										41		
										47		17 (16 25) 19 (5/20)
										36		
										42	10	
56-135 37-215 20-300	16 or 25 or 5/20	0.12 0.12 0.04/0.18	38 36 34.5	200	216	112	220 (16 25) 292 (5/20)	146	70	41		
										47		
										36		
										42		
32-155 37-215 20-300	8 or 12 or 5/20	0.12 0.12 0.04/0.18	38.5 37 34.5	288.5	293.5	152.5	263 (8 12) 385 (5/20)	147	103	69	22	29 (8 12) 30 (5/20)
										67		
56-135 37-215 20-300	16 or 25 or 5/20	0.12 0.12 0.04/0.18	38 36 34.5	200	216	112	220 (16 25) 292 (5/20)	146	70	42	10	17 (16 25) 19 (5/20)
32-155 37-215 20-300	8 or 12 or 5/20	0.12 0.12 0.04/0.18	38.5 37 34.5	288.5	293.5	152.5	263 (8 12) 385 (5/20)	147	103	67	22	29 (8 12) 30 (5/20)
56-135 37-215 20-300	16 or 25 or 5/20	0.12 0.12 0.04/0.18	38 36 34.5	200	216	112	220 (16 25) 292 (5/20)	146	70	41	10	17 (16 25) 19 (5/20)
32-155 37-215 20-300	8 or 12 or 5/20	0.12 0.12 0.04/0.18	38.5 37 34.5	288.5	293.5	152.5	263 (8 12) 385 (5/20)	147	103	42	22	29 (8 12) 30 (5/20)
56-135 37-215 20-300	16 or 25 or 5/20	0.12 0.12 0.04/0.18	38 36 34.5	200	216	112	220 (16 25) 292 (5/20)	146	70	47	10	17 (16 25) 19 (5/20)
32-155 37-215 20-300	8 or 12 or 5/20	0.12 0.12 0.04/0.18	38.5 37 34.5	288.5	293.5	152.5	263 (8 12) 385 (5/20)	147	103	69	22	29 (8 12) 30 (5/20)
										88 ¹⁾		
										103 ¹⁾		
										103 ¹⁾	10	
56-135 37-215 20-300	16 or 25 or 5/20	0.12 0.12 0.04/0.18	38 36 34.5	200	216	112	220 (16 25) 292 (5/20)	146	70	41		17 (16 25) 19 (5/20)
										47		
32-155 37-215 20-300	8 or 12 or 5/20	0.12 0.12 0.04/0.18	38.5 37 34.5	288.5	293.5	152.5	263 (8 12) 385 (5/20)	147	103	79	22	29 (8 12) 30 (5/20)
										77		
56-135 37-215 20-300	16 or 25 or 5/20	0.12 0.12 0.04/0.18	38 36 34.5	200	216	112	220 (16 25) 292 (5/20)	146	70	47	10	17 (16 25) 19 (5/20)
32-155 37-215 20-300	8 or 12 or 5/20	0.12 0.12 0.04/0.18	38.5 37 34.5	288.5	293.5	152.5	263 (8 12) 385 (5/20)	147	103	77	22	29 (8 12) 30 (5/20)
										47		
50-155 50-226 40-310	4/16	0.04/0.18	38 38 35.5	351	351	191	409 (4/16)	160	122	90	47	63 (4/16)
										118 ¹⁾		
32-155 37-215 20-300	8 or 12 or 5/20	0.12 0.12 0.04/0.18	38.5 37 34.5	288.5	293.5	152.5	263 (8 12) 385 (5/20)	147	103	79	22	29 (8 12) 30 (5/20)
										98 ¹⁾		
										113 ¹⁾		
50-155 50-226 40-310	4/16	0.06/0.25	38 38 35.5	351	351	191	409 (4/16)	160	122	90	47	63 (4/16)
32-155 37-215 20-300	8 or 12 or 5/20	0.12 0.12 0.04/0.18	38.5 37 34.5	288.5	293.5	152.5	263 (8 12) 385 (5/20)	147	103	113 ¹⁾	22	29 (8 12) 30 (5/20)
		0.06/0.25								118 ¹⁾	47	
50-155 50-226 40-310	4/16	0.04/0.18	38	351	351	191	409 (4/16)	160	122	107		63 (4/16)
		0.04/0.18	38							135 ¹⁾		
		0.06/0.25	35.5							107		
										135 ¹⁾		



Further options

The list of accessories available is quite extensive. All our hoists are available with either direct or low voltage control; many with encoders, electromechanical load sensor, double brakes and variable speed (frequency controls). These are only a few examples of the special accessories available.



STAR LIFTKET single phase electric chain hoists 125 kg – 2000 kg

(detail drawings page 8)

Capacity kg	Version	STAR-Model	Lifting speed m/min	Numbers of load falls	Duty group hoist FEM 9.511	Duty group load chain EN 818-7	Dimension of load chain DIN 5684-8 mm	Lifting motor kW	Duty rate starts/hour ED%/S/h	A mm	B mm	C mm	D mm	E mm	G mm	G1 mm	G2 mm	H mm	H1 mm
125	125/1-24	050/01	24	1	3m	2m	5.2x15	0.55	40/240	266	232	274	58	30	390	462	436	509	582
250	250/1-8	020/01	8	1	2m	1Bm	4x12	0.25	40/240	212	192	218	58	27	354	432	401	469	547
	250/2-12	050/01	12	2	3m	2m	5.2x15	0.55	40/240	266	232	274	58	30	443	515	489	509	582
500	500/2-4	020/01	4	2	2m	1Bm	4x12	0.25	40/240	212	192	218	58	27	407	485	454	469	547
	500/1-8	050/02	8	1	1Am	1Bm	5.2x15	0.55	40/240	266	232	274	58	30	390	462	436	509	582
	500/1-10	070/02	10	1	2m	2m	7.2x21	1.1	40/240	266	232	274	58	30	404	492	460	511	599
1000	1000/2-4	050/02	4	2	1Am	1Bm	5.2x15	0.55	40/240	266	232	274	58	30	443	515	489	509	582
	1000/2-5	070/02	5	2	2m	2m	7.2x21	1.1	40/240	266	232	274	58	30	514	582	570	511	599
	1000/1-6	070/01	6	1	1Am	1Bm	7.2x21	1.1	40/240	266	232	274	58	30	404	492	460	511	599
2000	2000/2-3	070/01	3	2	1Am	1Bm	7.2x21	1.1	40/240	266	232	274	58	30	514	582	570	511	599

All the advantages of the standard STAR LIFTKET chain hoists with single phase AC-motors are incorporated in the new model, the special safety clutch-brake system and the low head-room. These hoists are designed for building sites and places without a three phases power supply. Due to the excellent thermal performance of the motor a high duty rate and longer lifting heights are made possible. All single phase electric chain hoists require a minimum diameter of 2.5 sq. mm for the power and control cable for troublefree operation. The power supply cable should be as short as possible.



Single bolt push- and electric trolleys for use with underslung cranes



Hoists with internal electric limit switches and two independent brakes



Chains and hooks made from stainless steel



Special pendant to control two hoists

H2	J	J1	Trolley type		F Flange width	K	L Push trolley	M	Dia- meter of the wheels	Weights	
										STAR LIFTKET- Basic version	Push trolley
mm	mm	mm			mm	mm	mm	mm	mm	kg	kg
565	20	22	500	N S1 S2	50-106 110-200 210-300	33	200	112	70	33	8
516	20	22	500							16	
565	22	22	500							35	
516	22	22	500							17	
565	20	22	1000	N S1 S2	66-135 137-215 220-300	38 36 34.5	200	112	70	33	10
567	22	28	1000							36	
565	22	22	1000							35	
567	28	28	1000							41	
567	22	28	2000							36	
567	28	28	2000							41	

Please note:

- Power supply 230 V, 1 ph, 50 Hz
- Protection class IP55 / insulation class F
- The hoist weight has been calculated for 3 m height of lift
- Control cable 1.5 m supplied as standard
- Height of lift 3.0 m supplied as standard
- Different heights of lift and control cable lengths available on request
- If heights of lift increases beyond 20 m, SWL (Safe Working Load) has to be reduced by the additional weight of the chain
- Single phase electric chain hoists available only with direct voltage control

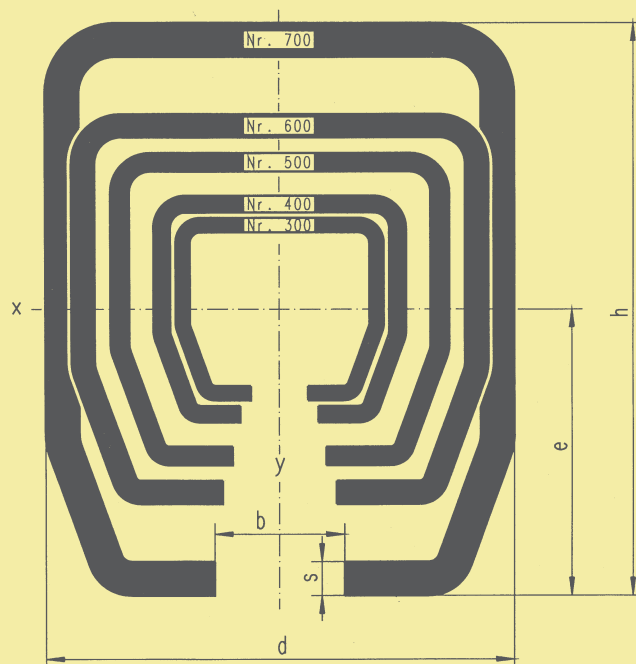
The technical data mentioned in the tables are approximate and subjects to change.



Radio control



- Easy to install, using standard fastener sets
- A great variety of special parts available, including curved rails, turntables, switches, single and double girder crane bridges and fastening equipment
- Taylor made solutions available
- Galvanised or black finish available
- Once the system has been installed it can be upgraded or extended at any time



LIFTKET-monorail and light crane system



The LIFTKET-monorail profiles are available made from either S235JR material (standard steel) or 1.4301 material (stainless steel except type 600 and 700). Standard steel profiles are in stock with black surface or galvanised. The max. length of each profile is 6000 mm. Please note, when planning the system: The max. load per meter of monorail has to be checked, especially for buffer sections of the monorail system.

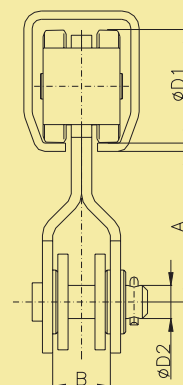
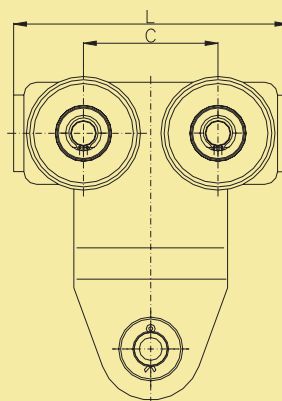
Monorail profile 300 – 700

Profile	H	d	b	s	Wx	Ix	e	Weights	Capacity
	mm	mm	mm	mm	cm ³	cm ⁴	mm	kg/m	kg*
No. 300	35	40	11	2.75	2.52	5.02	19.9	2.52	100
No. 400	43.5	48.5	15	3.2	4.4	10.93	24.8	3.57	200
No. 500	60	65	18	3.6	10.07	34.08	33.8	5.63	500
No. 600	75	80	22	4.5	19.76	83.08	42	8.77	1000
No. 700	110	90	25	6.5	51.68	312.71	60.5	16.46	1600

* Capacity per meter with a suspension distance 1 m

Monorail trolleys for use on the LIFTKET-monorail system

Dimension		Trolley type			
		1418	1518	1618	1718
Profile No.		400	500	600	700
L	[mm]	100	130	150	214
C	[mm]	52	66	75	105
A	[mm]	65	76	91.5	117
Diameter 1	[mm]	34	48	60	89
Diameter 2	[mm]	16	20	22	26
B	[mm]	30	35	35	45
Load	[kg]	125	250	500	1000



HOFFMANN Fördertechnik GmbH Wurzen

Dresdener Straße 67/72 · D-04808 Wurzen · Germany

phone: +49-3425-89 24-0 · fax: +49-3425-89 24-99

e-mail: sales@liftket.de · internet: <http://www.liftket.de>

Ho 2006/06: Previous editions are no longer valid.

LIFTKET

